



OPERATION MANUAL

NU® LINE

SPÜLBOY NU®
SPÜLBOY NU® water+
SPÜLBOY NU® pro

**UNIQUE!
100% HYGIENIC
CLEAN GLASSES**



Schäfer Produkte GmbH
Simonshöfchen 53
42327 Wuppertal/Germany
Phone: +49 (0) 202 695 32-0
E-Mail: info@spuelboy.de

www.spuelboy.de





Purpose

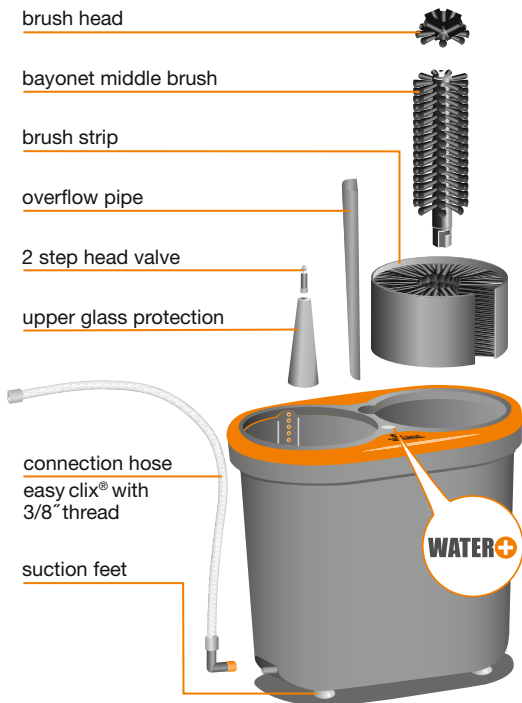
Your NU[®]/NU[®] water+/NU[®] pro glasswasher consists of the following parts:

- 1 x Unit incl. pre-wash and rinsing system
- 1 x Bayonet middle brush with head
- 1 x Brush strip
- 1 x Overflow pipe
- 1 x Water connection hose incl. easy clix[®] connector and 3/8" connection

Optional:

- Drain hose (portable)
- Cut-out template (built-in)
- Detergent (tablets + sanitizer powder)

This SPÜLBOY[®] glasswasher is used for the hygienic cleaning of serving receptacles in the catering sector, such as glasses, tankards and carafes.



Dimensions & Weight

W/H/D: 39.7 x 33.7 x 27cm
Canister Ø: 17cm - 20cm (oval)
Internal glass height: 26cm
Weight: 3kg (net)



Spare parts & accessories

Art.- name

Art.- no.

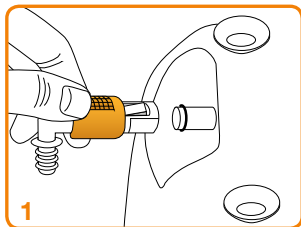
NU® brush head, standard	1700370
NU® brush head, big	1700372
NU® bayonet middle brush with head, standard	1700360
NU® bayonet middle brush, XL with big head	1700362
NU® brush strip, standard	1700350
NU® brush strip, XL	1700352
NU® 2 step head valve, orange	1700522
NU® water+ 2 step head valve, grey	1700524
NU® upper glass protection, orange	1700532
NU® connection hose with easy clix®	1700692

100% HYGIENE!
SPÜLBOY® CLEANSER

Art.- name

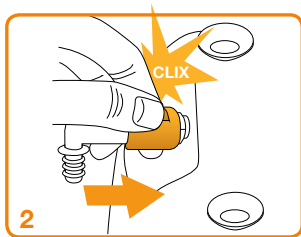
Art.- no.

NU® glass washing tablets	1700410
NU® sanitizer powder	1700412
NU® cleaning set	1700414
(Glass washing tablets, Sanitizer powder & Brush head, standard)	

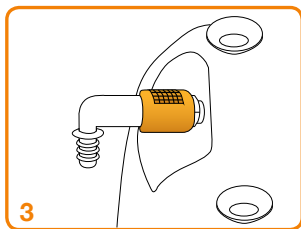


Attach the enclosed connection hose to the device.

Please make sure that the sealing ring is lodged in the designated groove on the unit side to avoid leaks.

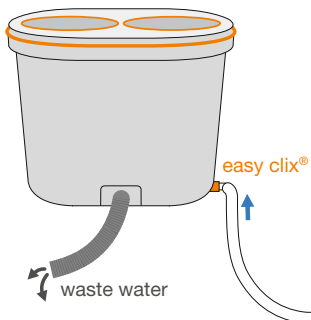


Set the safety slide to **OFF**, attach the connector to the NU[®] connection nozzle and then engage the slide in the **ON** position, thus activating the lock.

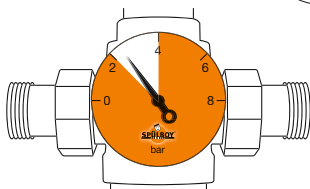
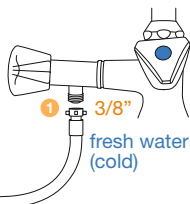


A "clix" signals a safe connection.

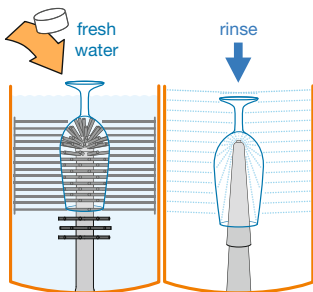
Connect the end of the water connection hose to the drinking water supply (cold water).



- 1 connect the device to the main water supply (3/8" or likewise)



- 2 regulate the water pressure between 2 to max. 4 bar

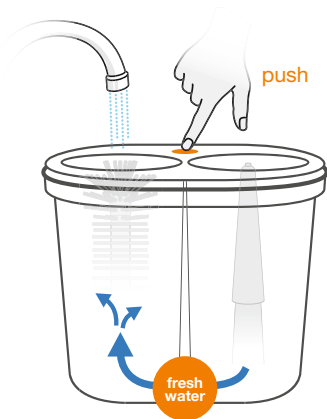


- 3 check the system
- fill in cold fresh water
 - fill in SPÜLBOY[®] tab
 - check horizontal water flow



ready to use



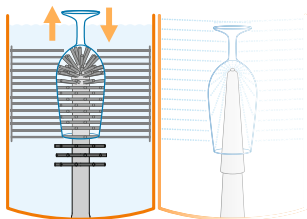


- 1 check and keep the cleanliness of the device and the work environment
- 2 fill the pre-sink with fresh water; the NU[®] water+ per **push** button
- 3 place an original SPÜLBOY[®] tab into the pre-washing canister



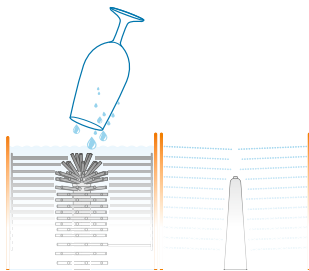
- 4 renew the NU[®] tab, if **during the rinsing (!)** **no more foam** forms (after appr. 6-8 hours)

How to clean a glass?

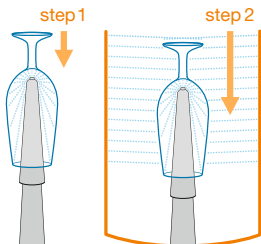


- 1 move the glass with steady up and down movements completely over the brush, at least **3-4 times**

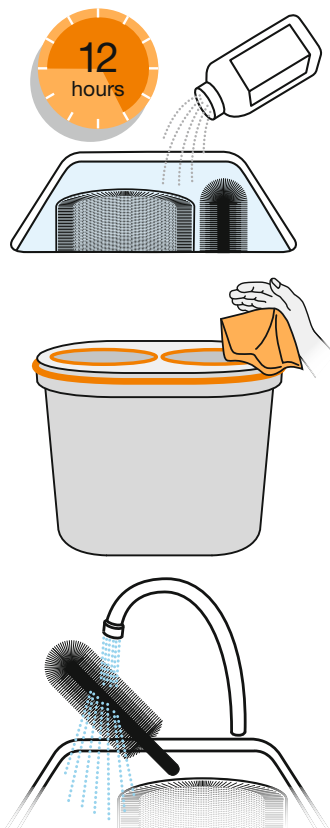
don't twist!



- 2 let the glass drain off briefly over the pre-washing canister



- 3 push down the 2 stage valve for at least **2-3 seconds**; rinse until the glass inside and outside is clearly cleaned



End of the day:

- 1 take off the brushes and place them with NU® brush sanitizer into a bucket/sink
- 2 fill up the sink with warm water and wait for appr. 12 hours
- 3 wipe off the device thoroughly with a clean sponge

In the morning:

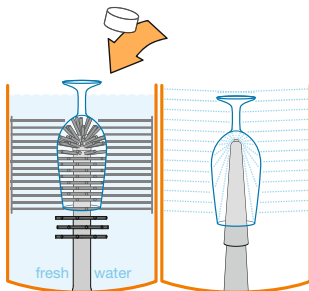
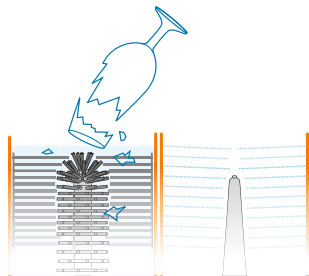
- 1 rinsing brushes clean
- 2 place the brushes back into the device
- 3 fill-up with fresh water and new tab



ready to use



In case of glass damage:



- 1 stop the rinsing process immediately
- 2 take the device off the water pressure
- 3 let the water drain out of the pre-washing canister
- 4 **take off the brushes carefully and rinse them clean**
- 5 **carefully remove all broken glass**
- 6 place the brushes back into the device
- 7 check the system





- Continuously check the visual cleanliness of the NU®/NU® water+/NU® pro.
- Check the connection hose and hose connections for damage or leaks.
- Clean the glasswasher at a maximum temperature of 70 °C in a dishwasher.
- The minimum pressure is 2 bar, the permissible maximum pressure is 6 bar (static).
- The glasswasher must only be operated in its original condition and with original spare parts.
- Stop the washing cycle immediately in case of broken glass and clean the unit thoroughly as described; proceed extremely cautiously and carefully remove all fragments of glass.
- Do not tip any food leftovers or other drink residues into the unit! This can lead to blockages of the water drain and therefore have a negative impact on the cleaning results.

Turn off the tap at the end of operation, disconnect the SPÜLBOY® from the water connection and clean the device and the brushes. (see section CLEANING THE DEVICE)



The original SPÜLBOY® warranty

Schäfer Produkte GmbH offers you a manufacturers warranty of 2 years from the date of purchase. We remediate all defects free of charge during this period, which are proven to be due to faulty material or workmanship and substantially impair its function. Other claims are excluded, e.g. wear down on brushes.

The warranty does not cover damage resulting from failure to follow the operating instructions, improper handling or normal wear and tear.

The warranty becomes void in case of any kind of intervention not authorised by Schäfer Produkte GmbH. If a repair should be necessary, please send the NU® without accessories, cleaned and well packed, with a description of the fault and proof of purchase, directly to Schäfer Produkte GmbH. The statutory warranty rights towards the seller and any possible seller warranties remain unaffected.

Loss of warranty for:

- Improper handling
- Improper cleaning
- Inappropriate use
- Destruction of the unit by force
- Opening of the glasswasher
- Use of caustic or chlorinated products



We are responsible

- certified according to DIN 6653-3 for manual glasswashers
- Company certification according to DIN EN ISO 9001:2015
- 100% hygiene without power consumption
- 100% cleanliness with the lowest fresh water consumption: Ø 8cl per glass cleaning
- Highest efficiency with minimal use of 100% biodegradable Glass washing tabs and brush cleaners
- SPÜLBOY® uses only high-quality and REACH-tested plastics.
- SPÜLBOY® glasswashers are fully recyclable. SPÜLBOY® ist a member of RESY Organisation für Wertstoffentsorgung GmbH.



Please dispose of disused devices in the plastic waste bin provided for this purpose and the paper packaging in the paper bin.